

THE ICIS SETUP PROGRAM

The ICIS Setup program automates the process of establishing a new ICIS implementation or installing a new or updated local database for an existing ICIS implementation (crop).

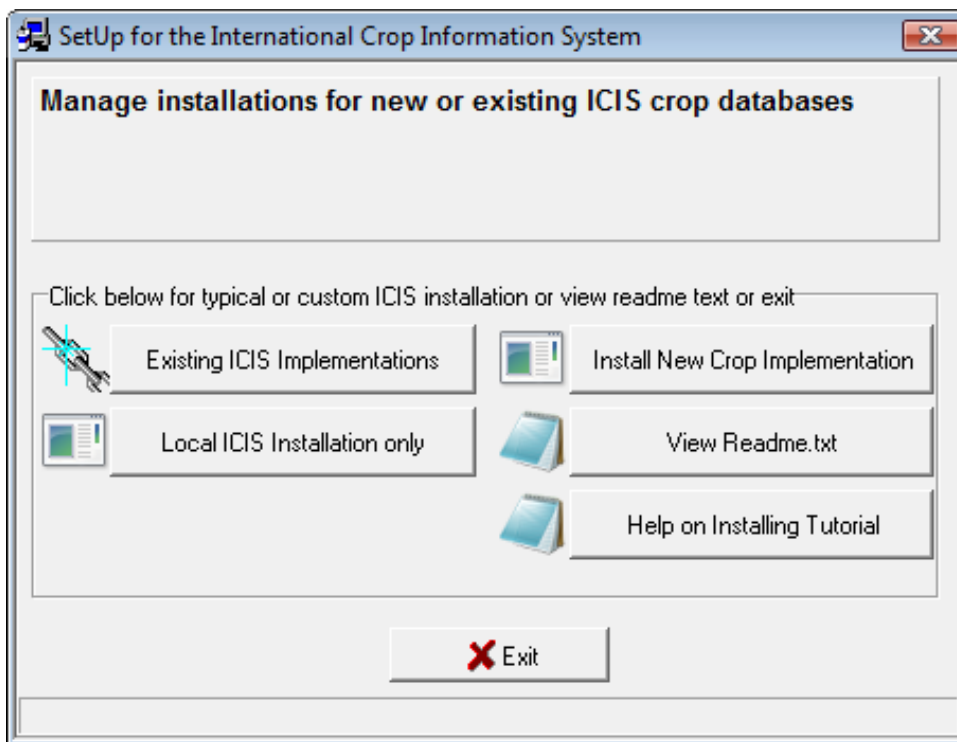
Requirements:

- Windows Vista
- At least 16 MB of memory
- Internet Explorer version 7 or higher
- Minimum Install: at least 2 GB of hard disk
- Full Install: add the size of the central database file
- At least 2x speed CD-ROM drive
- Administrator privilege

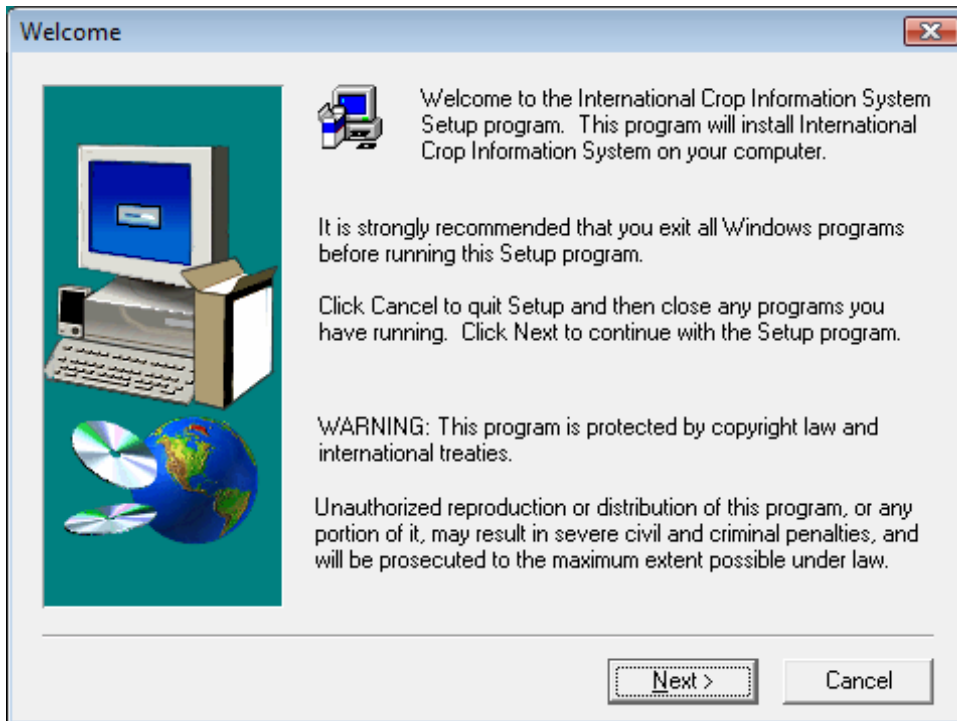
Install GMS for the First Time

The ICIS setup program should automatically run when the CD is inserted into the CD-ROM drive. If it does not, run the **Setup.exe** program from the CD drive with Explorer or from the command line.

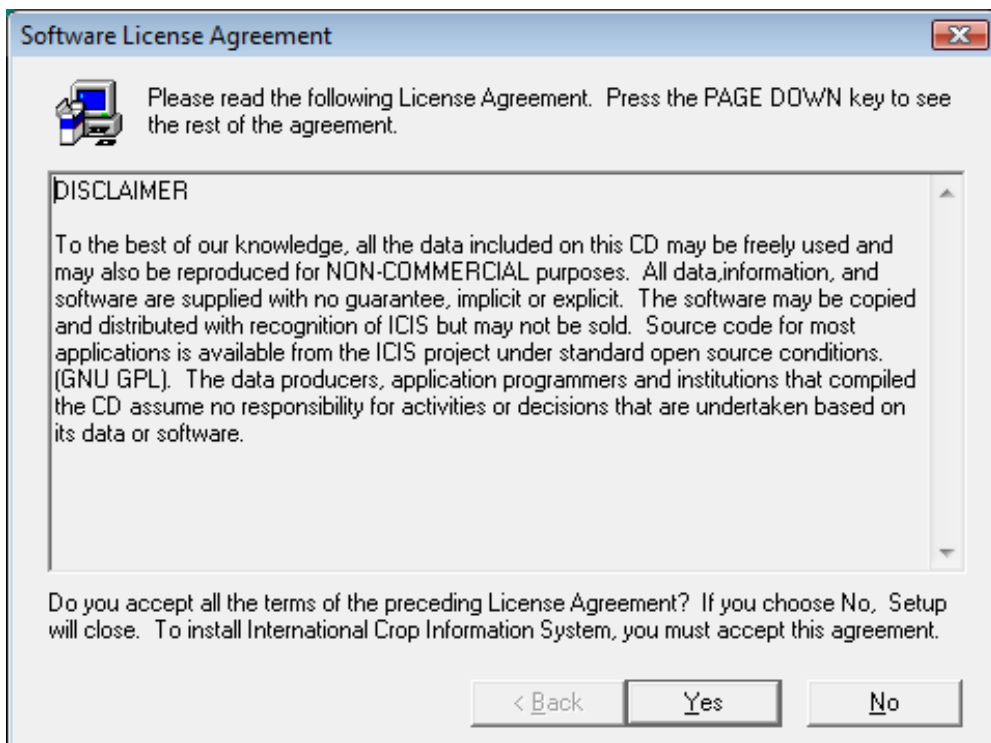
1. The main window appears. Click **<Existing ICIS Implementations>**.



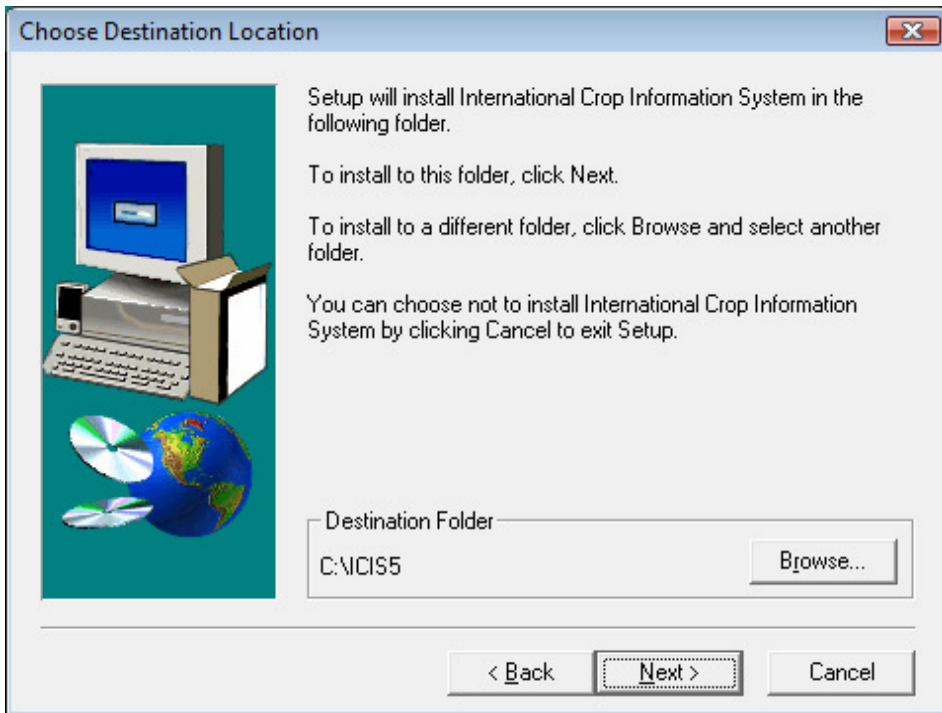
2. A welcome dialog box appears. Click **<Next>**.



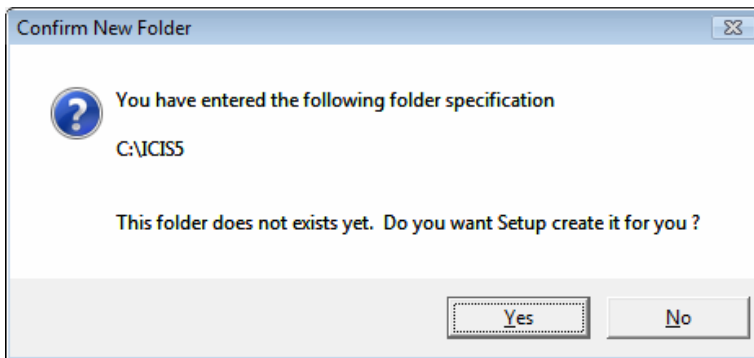
3. The software license agreement appears. Click <Yes> to accept the agreement; otherwise, click <No>. You will not be able to proceed with the installation if <No> is clicked.



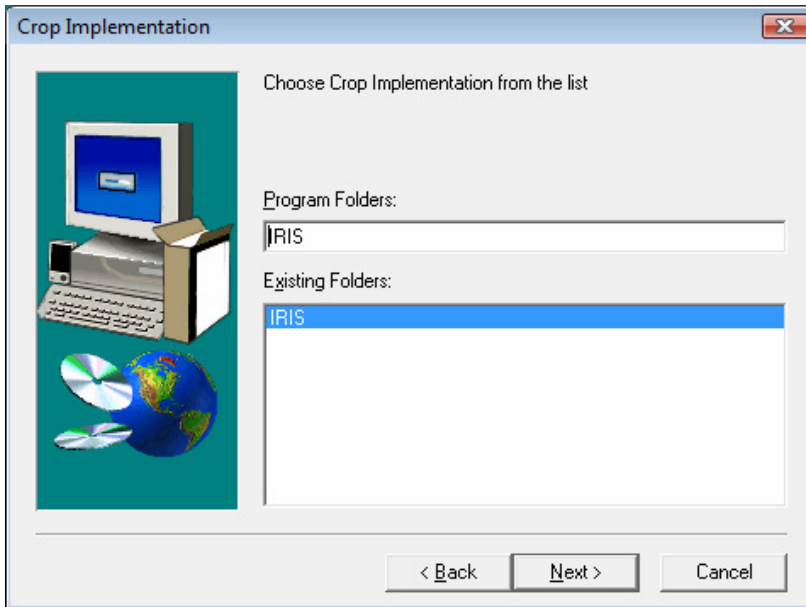
4. Specify where to install ICIS. The default destination folder is **C:\ICIS5**. To specify an alternative location, click <Browse>. A dialog box appears. Choose the desired drive and directory to install ICIS.



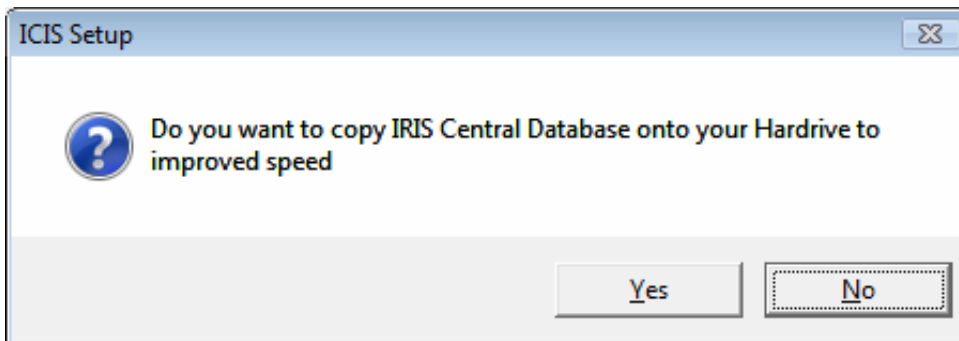
If the specified folder does not exist, a dialog box appears. Click <Yes> to create the new folder; click <No> to repeat the step. After a destination is specified, click <Next>.



Click <Yes> to create the directory.



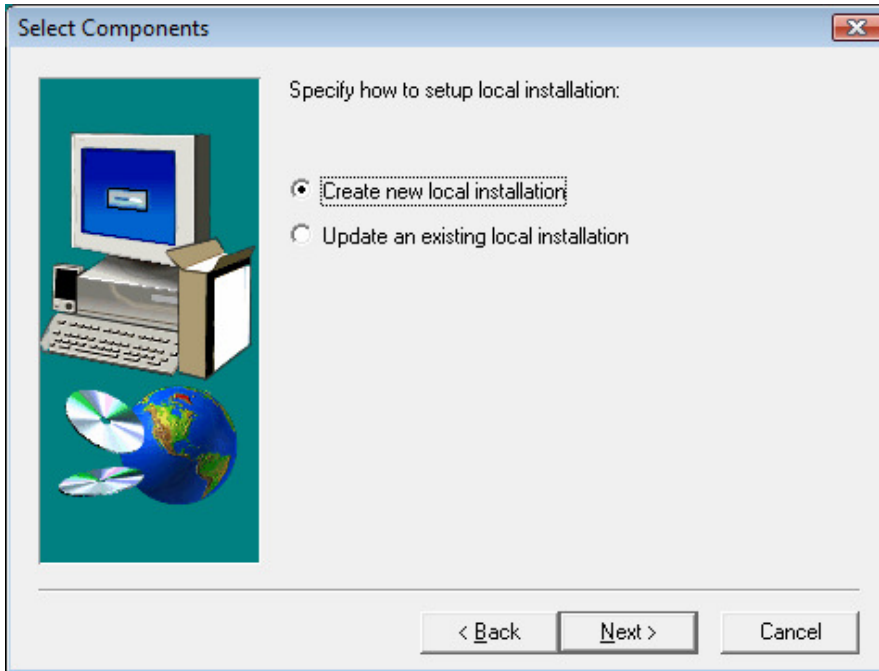
5. By default the Crop Implementation is IRIS, Click <Next>.
6. The query to copy the central database to the hard drive appears. Click <Yes> to copy the central database onto the hard drive; or click <No> to use the central database in the CD.



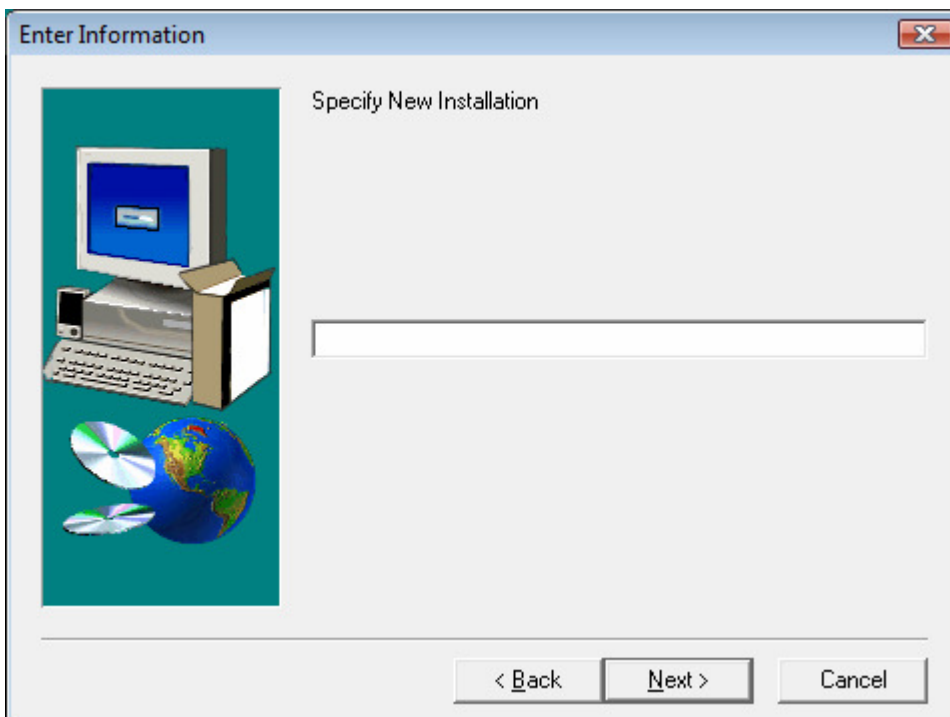
Notes:

- a. If <Yes> is clicked and there is not enough space on the hard drive for the central database, the setup program will abort. The setup must be repeated.
- b. If <No> is clicked, each time ICIS is run, the CD must be inserted in the CD-ROM drive for ICIS to run. Otherwise, no ICIS application can be run.

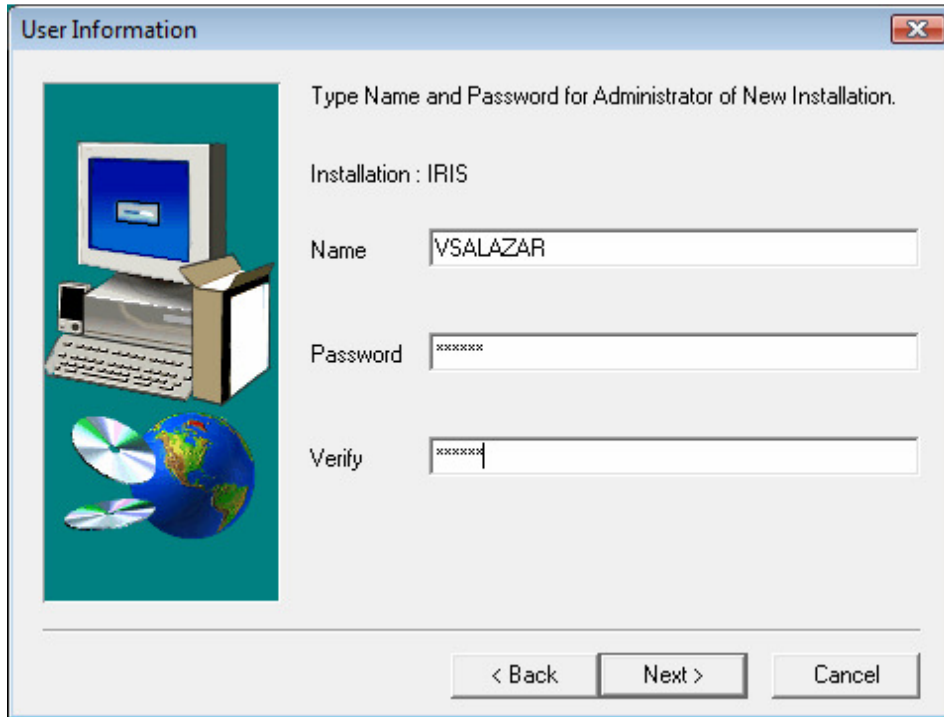
7. Select the first option <Create new local installation> to install a new local database. Click <Next>.



8. Enter a short description for the new installation. Maximum length of the description is 255. A description must be entered to proceed. Click <Next>.



9. Prescribe the administrator username and password for the new local database. The maximum length for username is 30; the maximum length for a password is 10. Click <Next>. (see example)



User Information

Type Name and Password for Administrator of New Installation.

Installation : IRIS

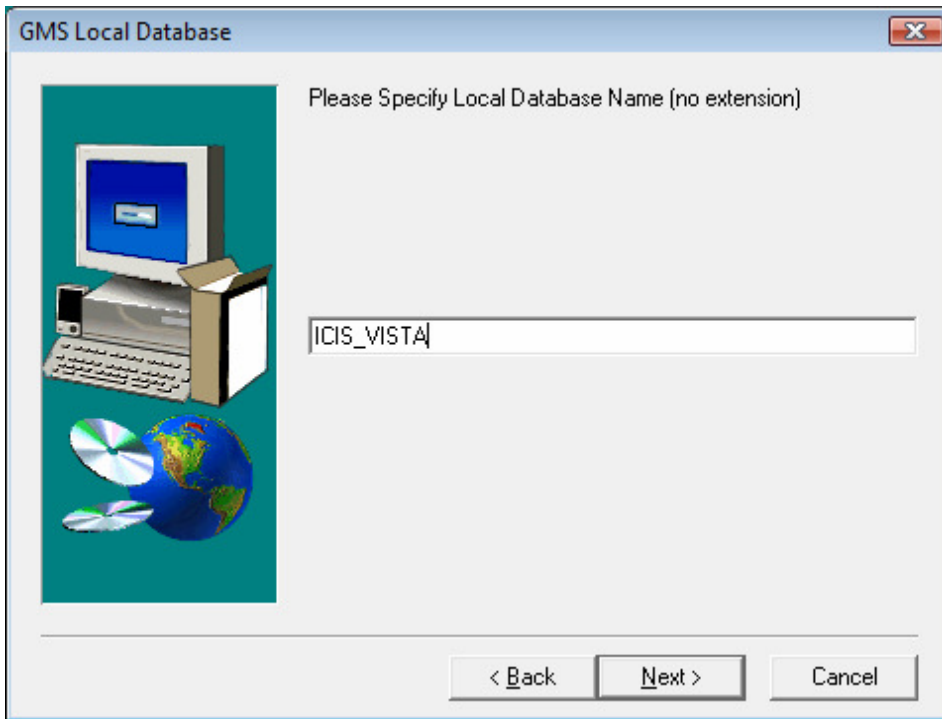
Name VSALAZAR

Password *****

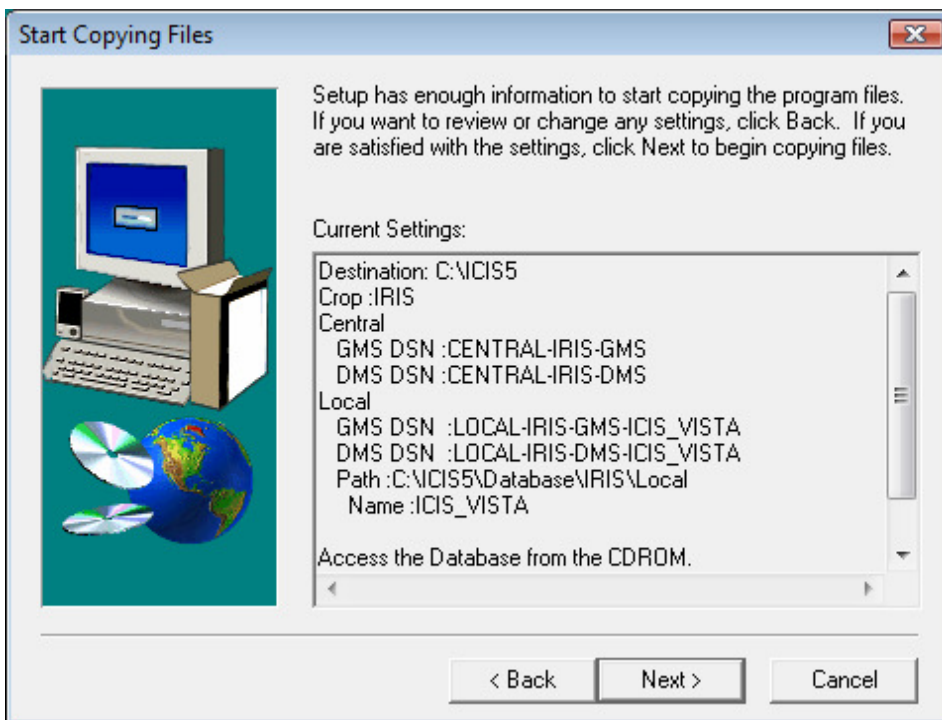
Verify *****

< Back Next > Cancel

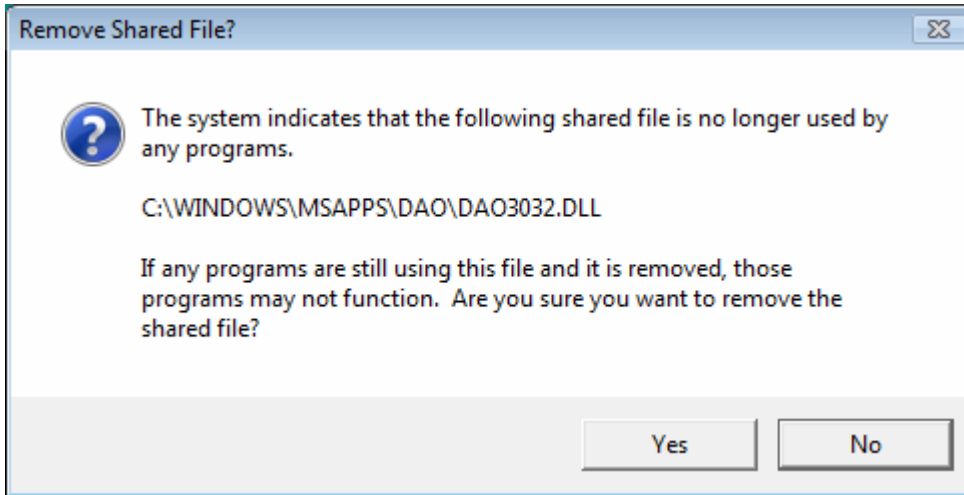
10. Prescribe a local database name. This corresponds to the database filename. Do not add an extension for the name. The setup automatically adds the file extension. Click <Next>



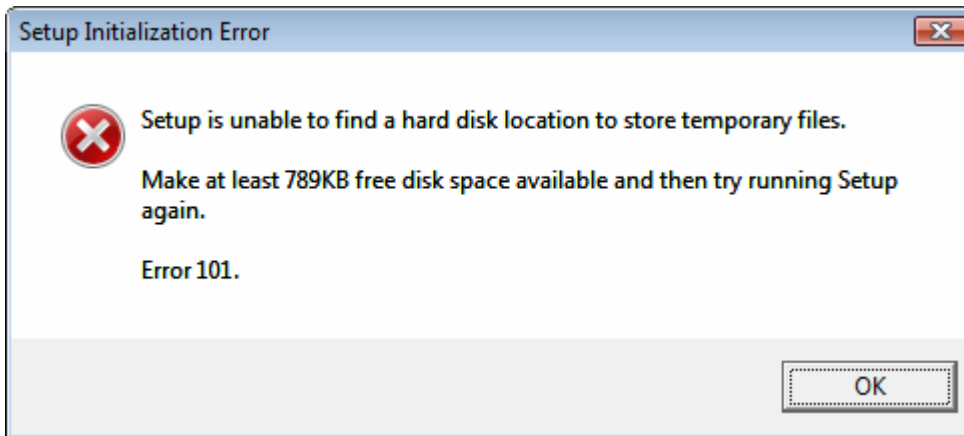
11. A summary is displayed. To start copying the files onto the hard drive, click <Next>. Files are copied to the destination directory.



12. During the installation, these error messages will appear:

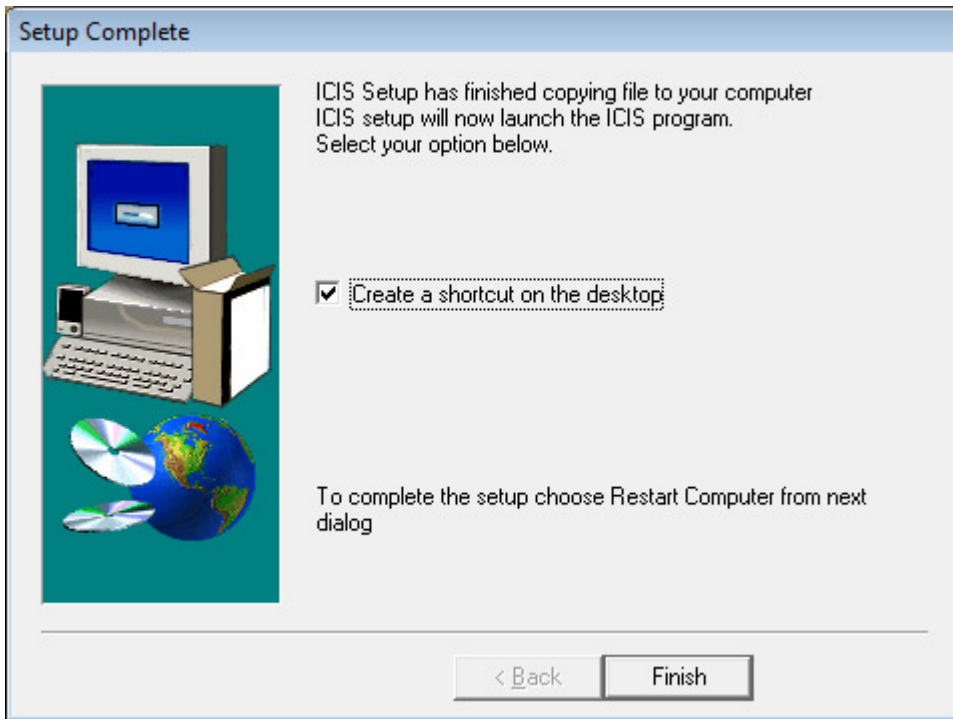


a. <Remove Shared File> Just Click <No>

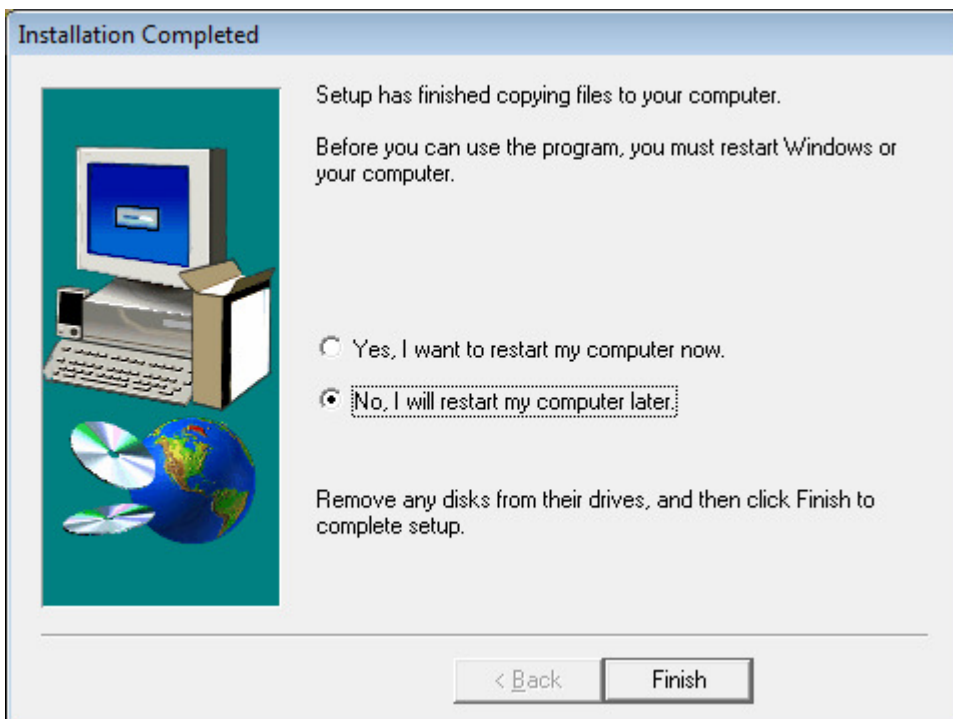


b. <Setup Initialization Error> Just Click <OK>

13. To create a shortcut to the launcher on the desktop, check the 'Create a shortcut on the desktop' checkbox. Otherwise, uncheck the box. Click <Finish>.



14. After the setup is complete, the option to restart the computer or not appears. It is recommended that the computer be restarted. Otherwise, components that were installed in the setup process might not work properly. Click <Finish>.



15. Look for the **ICIS Launcher** in your desktop, Open and select **ICIS_VISTA.ini** and start using ICIS.

