



Restricted Access to ICIS Records: Suggested Approach

Arlet M. Portugal
CRIL-IRRI

Current Scenario

- ICIS has USERS and INSTLN tables to determine the installation group of a user
- However, access to records is not sometimes based on installation group
- The access group can be based on different categories.

Suggested Additional Tables

- Grouping of Users
- Role or Group to use for accessing ICIS primary tables

Query: Retrieve Study when User=108

- User 108 owned the HB studies
- User 101 owned the RYT studies
- User 108 and 101 are members of Group 1
- User 108 can access study records owned by members of Group 1

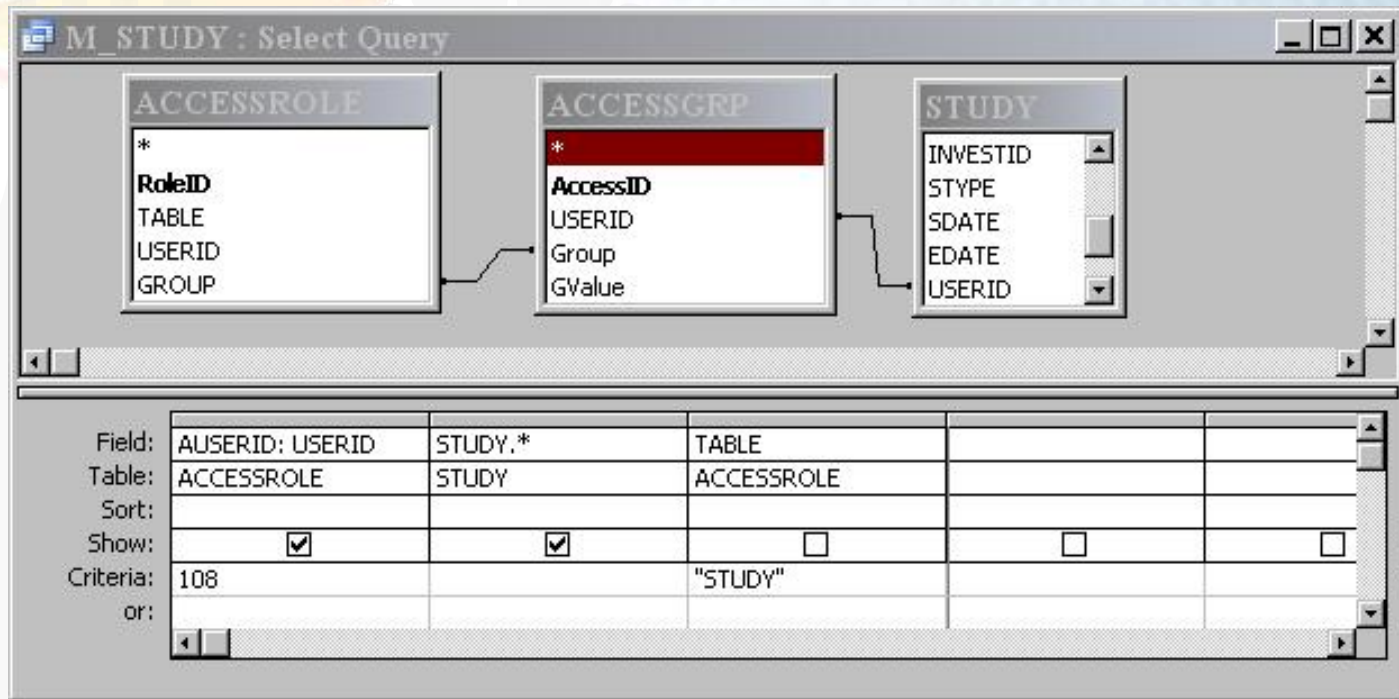
Access Group Table

AccessID	USERID	Group
6	101	1
3	108	1
1	104	1
11	104	2
10	105	2
7	101	2
4	108	2
12	101	3
5	108	3
9	106	4
8	105	4

Access Role Table

RoleID	TABLE	USERID	GROUP
1	GERMPLSM	108	2
2	STUDY	108	1
3	LISTNMS	108	3
4	STUDY	105	4

Definition of M_STUDY View



Part of the M_STUDY

AUSERID	STUDYID	SNAME	TITLE	USERID
108	536	RYT2001WS	Replicated Yield Trial 2001 Wet Season	101
108	543	RYT2002WS	Replicated Yield Trial 2002 Wet Season	101
108	547	RYT2002DS	Replicated Yield Trial 2002 Dry Season	101
108	551	RYT2003DS	Replicated Yield Trial 2003 Dry Season	101
108	552	RYT2003WS	Replicated Yield Trial 2003 Wet Season	101
108	556	RYT2005DS	Replicated Yield Trial 2005 Dry Season	101
108	561	RYT2004WS	Replicated Yield Trial 2004 Wet Season	101
108	565	RYT2004DS	Replicated Yield Trial 2004 Dry Season	101
108	1	HB19770	1977 Hybridization Block, Dry Season	108
108	2	HB19771	1977 Hybridization Block, Wet Season	108
108	3	HB19780	1978 Hybridization Block, DrySeason	108
108	4	HB19781	1978 Hybridization Block, Wet Season	108
108	5	HB19790	1979 Hybridization Block, Dry Season	108
108	6	HB19791	1979 Hybridization Block, Wet Season	108
108	7	HB19800	1980 Hybridization Block, Dry Season	108
108	8	HB19801	1980 Hybridization Block, Wet Season	108
108	9	HB19810	1981 Hybridization Block, Dry Season	108

Test in the DLL and Workbook

- An ICIS.INI key is temporarily used to determine if there is restriction in accessing ICIS records. There should be another way to store this setting as the INI file can be edited.

[DLL SETTINGS]

RESTRICTED=YES

- DMS_getStudy is modified to retrieve data from the M_STUDY view instead of the STUDY table when the RESTRICTED key is set
- No changes in the Workbook

Issues:

- Extensive modification to the retrieval functions (find and get) of the ICIS32.DLL.
- The implication in generating the pedigree and generation tree of a germplasm is not yet investigated.
- This is just restriction applied only when using the ICIS application but not when accessing the directly the database.